

CITY OF BATAVIA

CONTROL MONUMENT DIAGRAM

STATION NAME: BATAVIA 102 DATE SET: 6-26-2006 OBSERVATION: 11-9-2017

MONUMENT TYPE: STAINLESS STEEL ROD IN SLEEVE

HORIZONTAL DATUM: NAD 83 (2011), IL EAST ZONE		US FEET	METERS	ACCURACY
LATITUDE: 41°51'31.96756"	NORTHING:	1891165.90	576428.520	NETWORK 0.41 CM
LONGITUDE: 88°19'54.83058"	EASTING:	984641.17	300119.229	

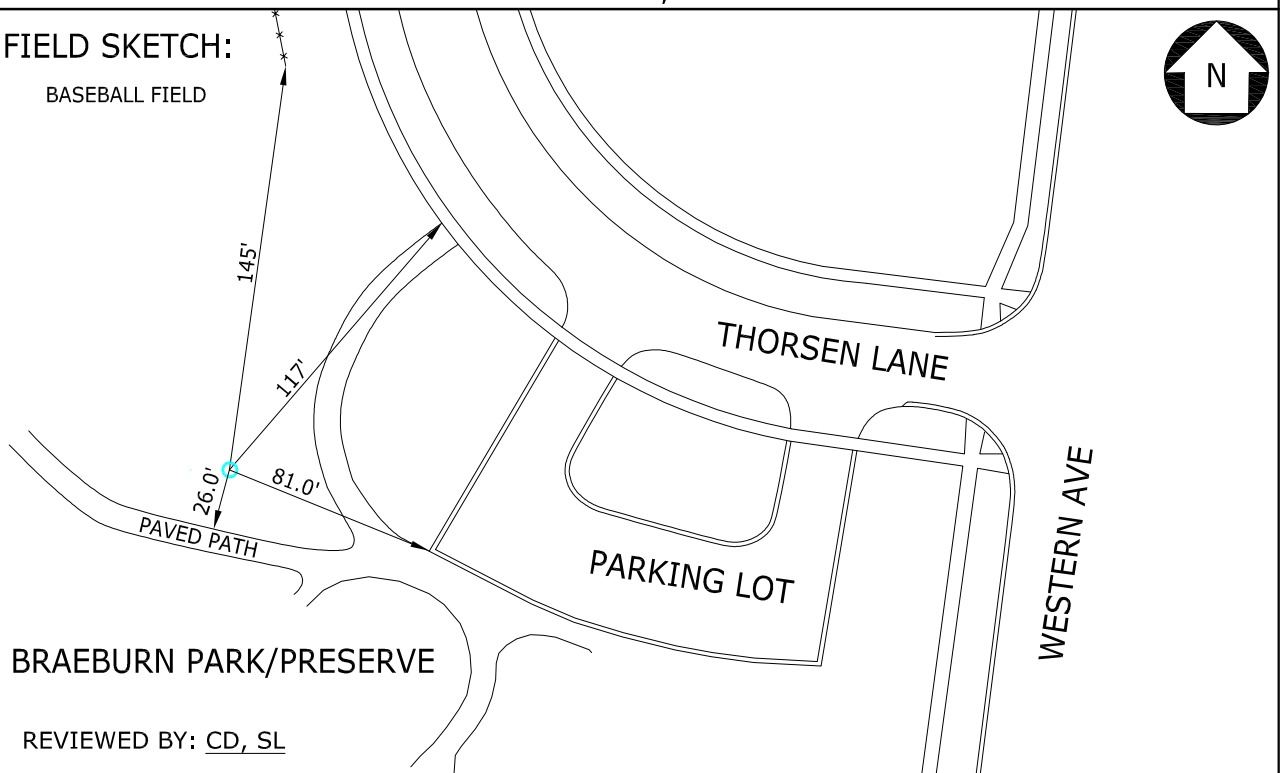
COMBINED SCALE FACTOR: 0.99994637

ORTHOMETRIC HEIGHT	FEET	METERS	DATUM	ACCURACY
	707.64	215.689	NAVD88	2ND ORDER CLASS I

ELLIPSOIDAL HEIGHT	FEET	METERS	GEOID HEIGHT	FEET	METERS	SOURCE
	598.98	182.569		108.63	-33.111	GEOID 12B

STATION DESCRIPTION: STAINLESS ROD WITH 6 INCH LID, 145 FT SE OF EAST END OF BALL FIELD FENCE, 117 FT SW OF INTERSECTION OF WALK AND ASPHALT PATH, 81.0 FT W OF CURB AT SW OF PARKING LOT, 26.0 FT N OF N EDGE ASPHALT PATH.

FIELD SKETCH:



BRAEBURN PARK/PRESERVE

REVIEWED BY: CD, SL

S:\CITY_OF_BATAVIA\21707.088 BENCHMARK UPGRADE\15_SURVEY\15.4_DRAWING_DATA\BATAVIA 102 SET 6-26-2006.DWG

